

Residential Building

CASE STUDY

PROJECT OVERVIEW

This case study examines the integration of Building Information Modeling (BIM) technology in the design, construction, and management of two G+20 residential towers. The project aimed to leverage BIM to enhance collaboration, reduce errors, optimize construction workflows, and improve overall project delivery. The case study highlights the successful integration of BIM into different stages, from design and planning to construction.

Client: Shiv Samarth Group

Location: Ahemdabad, India

Description: Residential

Area: 2,50,000 sq.ft.

Disciplines: ASI and MEP

SCOPE & DELIVERABLES

- Development of LOD 350 BIM Model.
- Creation of Floor Plan Sheets with detailing
- Creation of Construction Document Sets.
- Weekly Coordination Meetings
- All Services Coordination.





BENEFITS

- Reduced design clashes and construction collisions.
- Improved coordination among stakeholders.
- Improved project visualization and planning.
- Optimal resource usage and management.
- Simplified management processes.

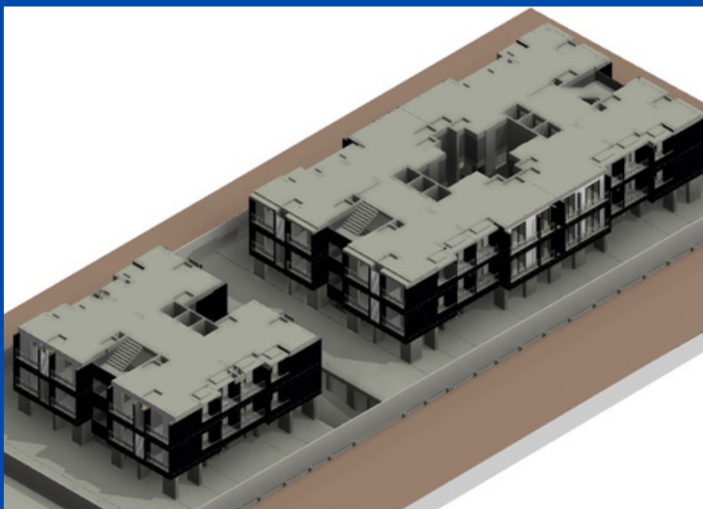
CHALLENGES

- Managing a steady stream of design changes and revisions in an efficient manner.
- Handling many revision requests while keeping models in sync.
- Ensure quality and efficiency within tight timeframes.
- Ensure exact paperwork for permit and construction sets.



OUR APPROACH

- Engaging closely with the client to establish alignment with project goals while implementing required design revisions.
- Leveraging industry best practices and following regional regulations to guarantee the models' precision, coherence, and suitability for the project's needs.
- Weekly coordination meetings, emphasizing and resolving RFIs, key concerns raised during meetings, and a standardized documentation approach.
- Setting Up Milestone-Specific Checklists for Superior Quality Sheets and Models.



CONCLUSION

This case study demonstrates how BIM has the ability to revolutionize the construction sector. The project team increased productivity, decreased risks, and delivered better project results through integrating BIM into the project.

Contact Us



+91 8982 00 7391



contact@tecverse.net



Block B-05, Gulmarg Parisar,
Bicholi Road, Indore,
MP, INDIA - 452016

Visit at
www.tecverse.net